

PUBLIC MEETING: 3/31/22 (5:30 PM TO 7:30PM) WILLIAM BURGESS BLVD EXTENSION (US 17 TO MINER ROAD)



PUBLIC MEETING: WILLIAM BURGESS BLVD EXTENSION

Bid/RFP No. NC16-033

Introduction:

- **Jeff Gray, Vice Chairman, District 3 County Commissioner**
- **Taco Pope, AICP County Manager**
- **Robert Companion, PE County Engineer**
- **Jeffrey Bunch, Director of Facilities Nassau County School Board**
- **GAI Consultants, Inc. (Engineer of Record)**
 - **Ron Hoogland, PE**
 - **Randal Thompson, PE**
 - **Becky Bray, PE**
 - **Rondai Jerido, EI**

PUBLIC MEETING: WILLIAM BURGESS BLVD EXTENSION



Looking East on WBB (US17)



Looking West on WBB (From Miner Rd)

PUBLIC MEETING: WILLIAM BURGESS BLVD EXTENSION



Design has included:

- Traffic Study/ Safety Considerations
- Roadway Alignment and Drainage
- Geotechnical Investigations
- Environmental Assessments (wetland mitigation and avoidance)
- Utility Coordination

PUBLIC MEETING: WILLIAM BURGESS BLVD EXTENSION

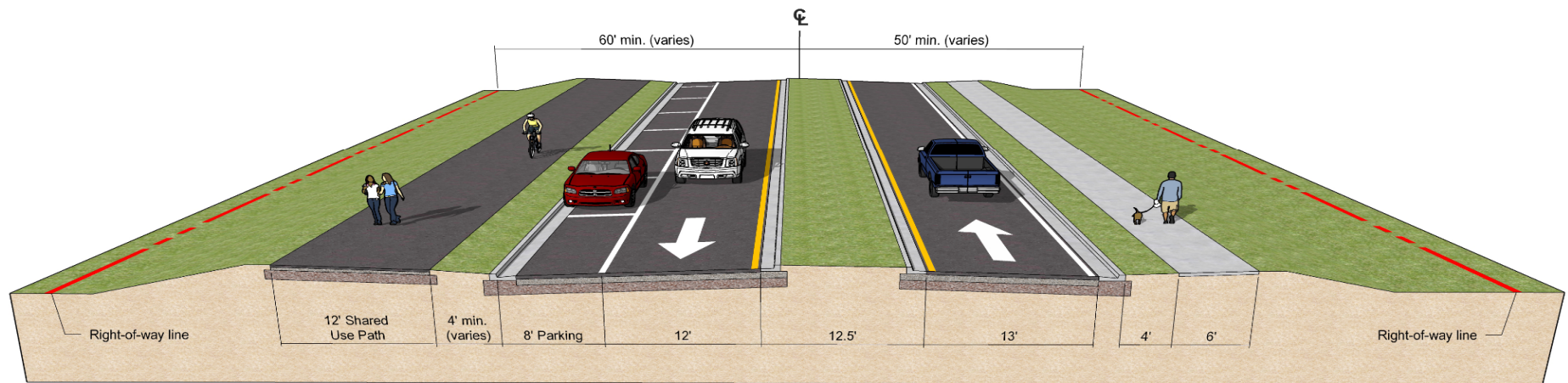
Corridor Project Stakeholders:

- **Adjacent Property Owners and Community**
- **Yulee High School and Middle School**
- **Utility Companies:**
 - **JEA, FPL, Comcast, AT&T and Florida Public Utilities**
- **Florida Department of Transportation**
- **William Burgess Overlay District**

PUBLIC MEETING: WILLIAM BURGESS BLVD EXTENSION



PUBLIC MEETING: WILLIAM BURGESS BLVD EXTENSION



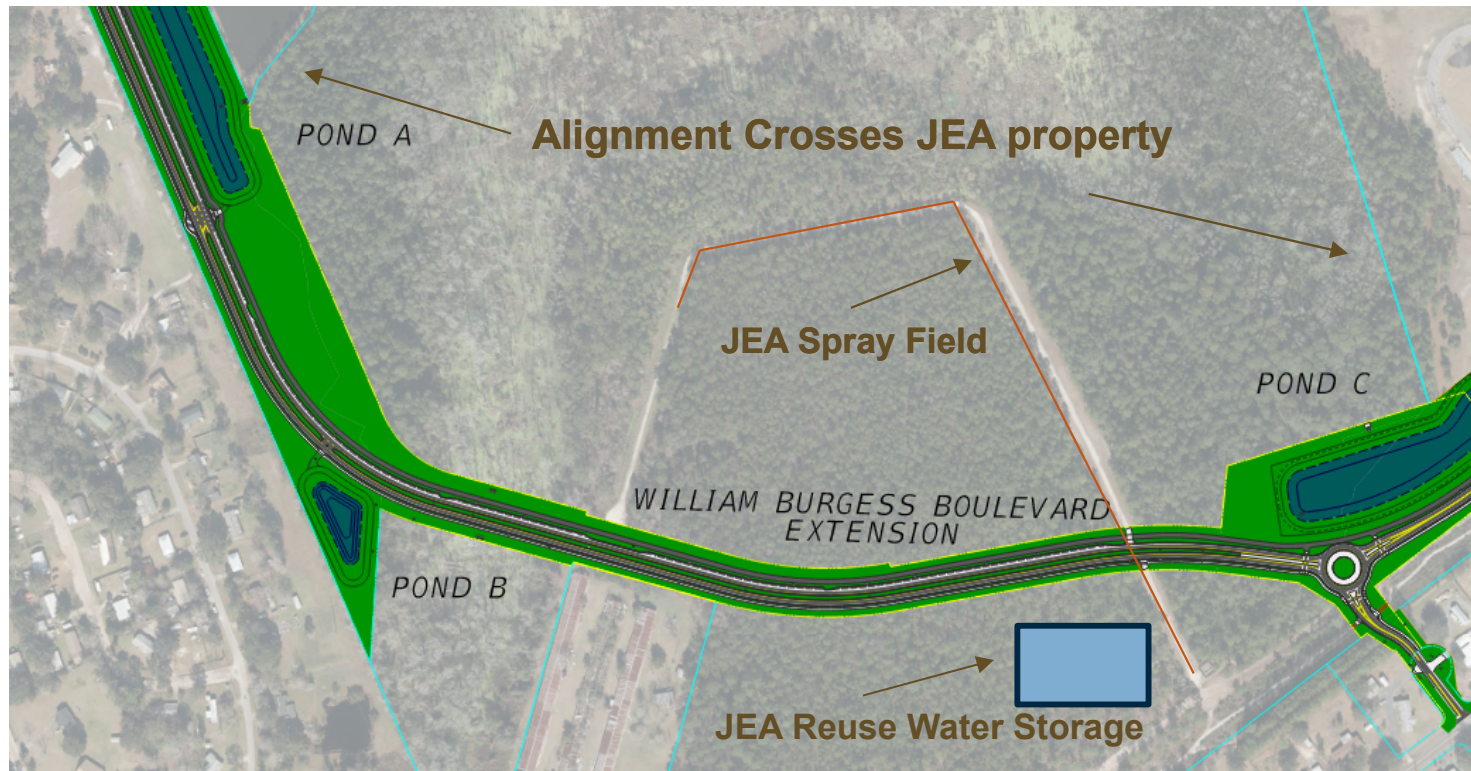
Typical Roadway Section (Curb & Gutter and a Raised Median)

PUBLIC MEETING: WILLIAM BURGESS BLVD EXTENSION



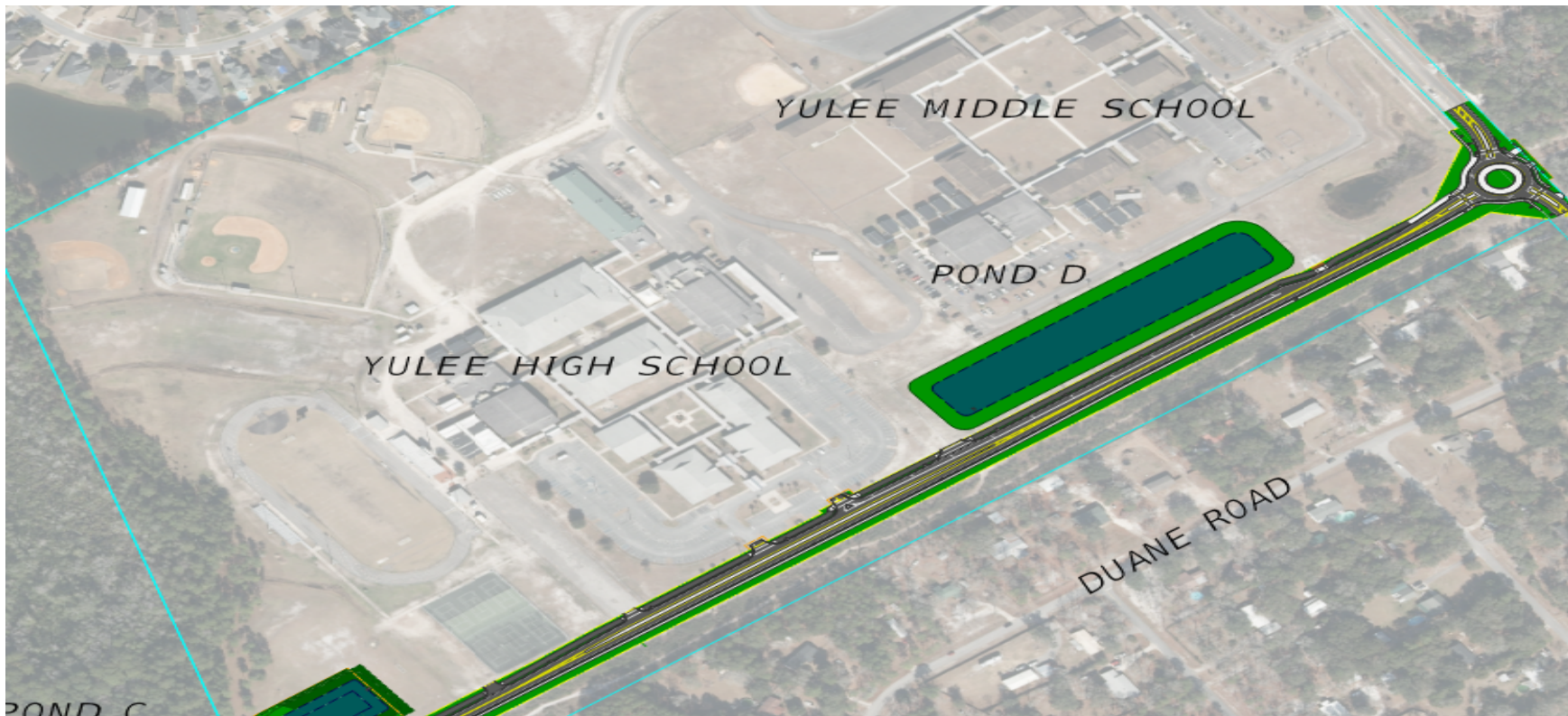
Roadway Alignment East of US17

PUBLIC MEETING: WILLIAM BURGESS BLVD EXTENSION



Roadway Alignment Adjacent to JEA property

PUBLIC MEETING: WILLIAM BURGESS BLVD EXTENSION



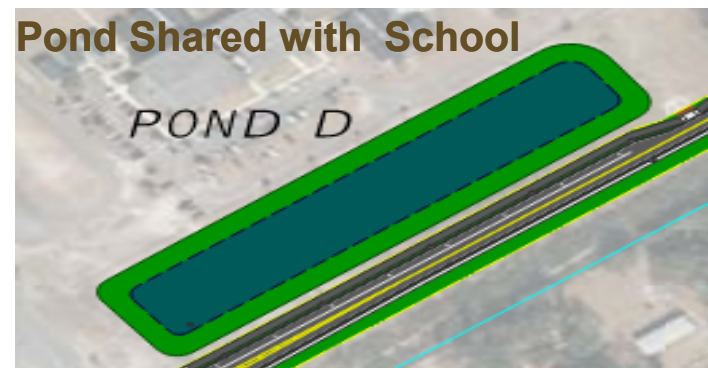
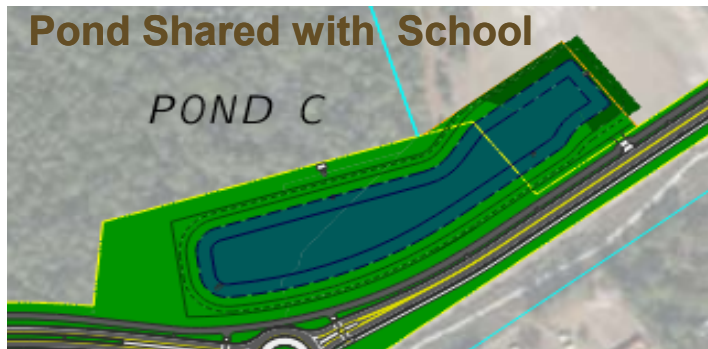
Roadway Alignment Adjacent to Yulee Schools

PUBLIC MEETING: WILLIAM BURGESS BLVD EXTENSION



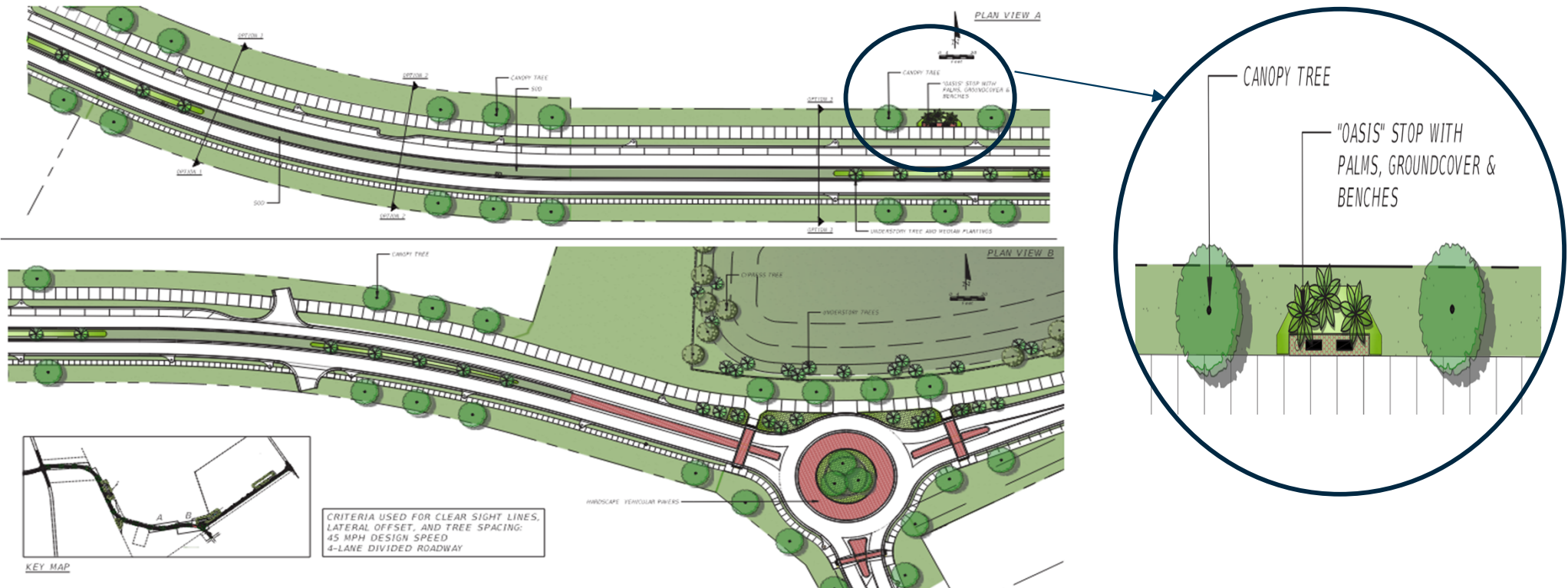
Traffic Controls include the roundabouts at Miner Road

PUBLIC MEETING: WILLIAM BURGESS BLVD EXTENSION



4- Retention Ponds are proposed (2- Ponds are shared with the School)

PUBLIC MEETING: WILLIAM BURGESS BLVD EXTENSION



Landscaping Concept Opportunity

PUBLIC MEETING: WILLIAM BURGESS BLVD EXTENSION

CANOPY TREES



Live Oak



Bald Cypress (Pond area)

UNDERSTORY TREES



Crape Myrtle



Redbud



Dogwood

SHRUBS & GROUNDCOVERS



Coontie



Pink Muhly Grass



Cordgrass



Dwarf Yaupon Holly



Simpson Stopper



Shiny Blueberry



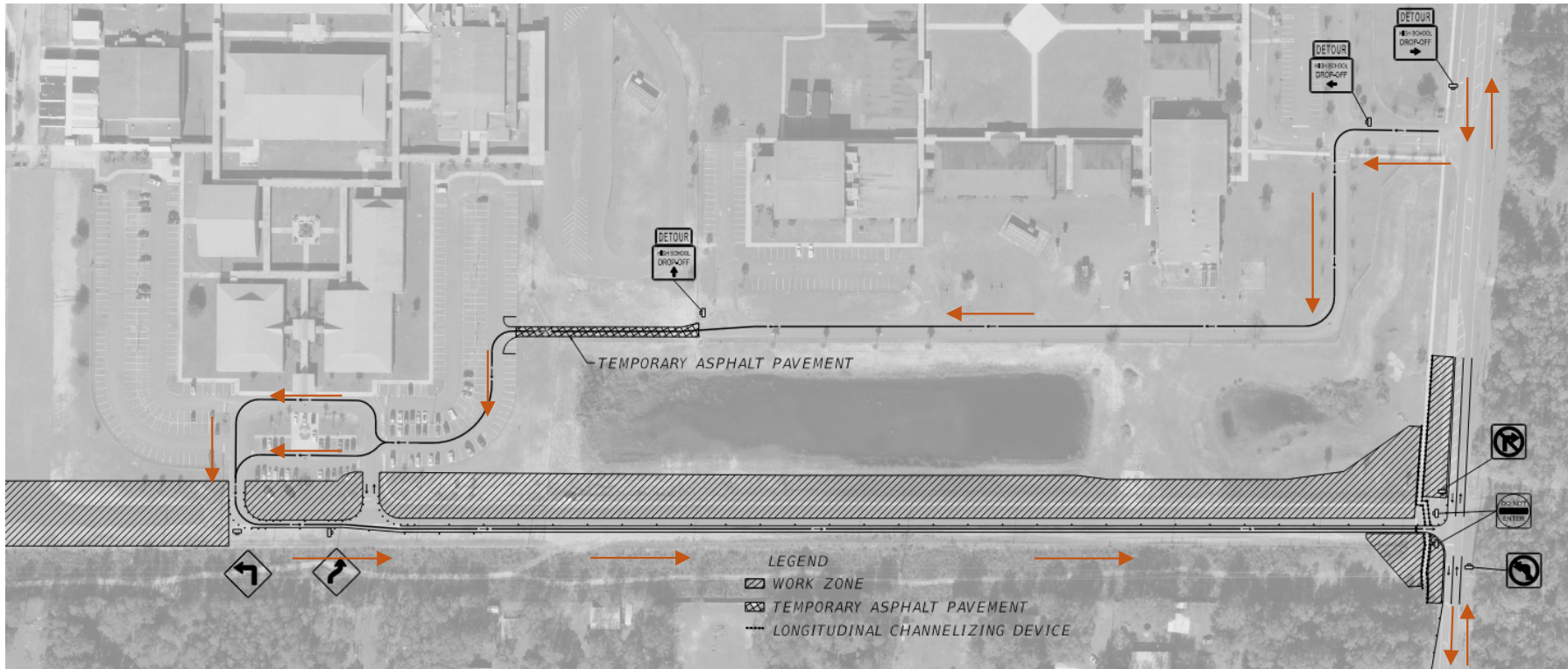
Day Lily



Twinflower

Landscape

PUBLIC MEETING: WILLIAM BURGESS BLVD EXTENSION



Maintaining School Access during Construction

PUBLIC MEETING: WILLIAM BURGESS BLVD EXTENSION

Questions?

Also, please fill our Comment Cards