

NASSAU COUNTY

• CITIZENS' GUIDE •

An Official Publication by your Local Government

This Guide was developed as a coordinated effort with the agencies listed below to save taxpayer dollars and provide Nassau County citizens with important information. This publication was printed on lower grade paper to reduce cost and is made with recycled material.

LOCAL GOVERNMENT INFORMATION	2
2018 NASSAU COUNTY VOTER GUIDE	3-6
MESSAGE FROM THE B.O.C.C.	7
LOCAL CONSERVATION INFORMATION	7
PUBLIC SAFETY INFORMATION	8-11
GOVERNMENT & COMMUNITY CONTACT INFORMATION	12

INSERTS

FLORIDA VOTER REGISTRATION APPLICATION/VOTE BY MAIL BALLOT REQUEST FORM

POSTAGE PAID ENVELOPE



VICKI P. CANNON SUPERVISOR OF ELECTIONS



In an effort to ensure you are informed about upcoming elections and the voting process, we are providing every household with a Voter Guide (on pages 3-6), Florida Voter Registration Applications with Vote by Mail Ballot Request Forms, and a postage paid envelope (inserts). Be Election Ready -complete and return the enclosed form today to:

- Register to vote or update your voter record
- Update your signature

- Request a replacement card
- Request a ballot be mailed to you

Thank you for the opportunity to serve you and please do not hesitate to contact our office if we can be of assistance to you in any way.

Vote In Honor of a Veteran!
Vicki P. Cannon

JOHN A. CRAWFORD CLERK OF THE CIRCUIT COURT & COMPTROLLER



The Florida Constitution established the Clerk & Comptroller as a public trustee, independently elected to protect public funds and public records while performing these major functions:

- County Chief Financial Officer
- Treasurer and Auditor
- County Recorder and Custodian of Legal Records
- Clerk of the Circuit Court, the service and support center for the county's court system

• Ex-Officio Clerk to the Board of County Commissioners
The Nassau County Clerk & Comptroller proudly serves a local population of approximately 80,000 citizens. The clerk's 67 employees perform more than 1,000 different functions and provide services from two locations and online at www.nassauclerk.com.

Thank you for placing your trust in us,
John A. Crawford

JOHN M. DREW TAX COLLECTOR



The employees of the Nassau County Tax Collector's Office work tirelessly to earn the public's confidence and trust by providing the best customer service and efficient use of public funds. Our customer service mission is simple; we strive to treat our customers with such professionalism that we succeed in changing their perception of government. The three descriptive words that we have adopted to describe our office are "efficient, ethical and effective." Most citizens interact with

our office multiple times a year. It is our sincere desire that those interactions exceed their expectations.

It is an honor to be elected to serve you,
John M. Drew, MBA CFC

A. MICHAEL HICKOX PROPERTY APPRAISER



Our office is required by state law to perform 3 specific duties for the citizens of Nassau County:

- Appraise Properties
- Administer Exemptions
- GIS Mapping & Addressing

In performing our duties, it is the commitment of this office to execute our responsibilities in a fair and equitable manner. Our goal is to always provide

accurate information and courteous, professional service to all who request or need assistance. Please take some time and visit our website www.NassauFLPA.com.

Thank you for the opportunity,
A. Michael Hickox, CFA

BILL LEEPER SHERIFF



On behalf of the men and women of the Nassau County Sheriff's Office, I welcome you to visit our website at: www.nassauso.com. We hope you'll discover that this site contains useful information about

the Sheriff's Office, about your community, and about the type of services we offer. Our sworn and non-sworn members are committed to providing responsive quality, and cost effective service to the citizens of Nassau County. We continue to work in partnership with various agencies throughout the community, believing that collaboration is the key to solving problems and achieving goals that will benefit our citizens.

From All of Us at NCSO, Please Stay Safe!
Bill Leeper

NASSAU COUNTY BOARD OF COUNTY COMMISSIONERS



DANIEL
LEEPER
DISTRICT ONE



STEPHEN
KELLEY
DISTRICT TWO



PAT
EDWARDS
DISTRICT THREE



GEORGE
SPICER
DISTRICT FOUR



JUSTIN
TAYLOR
DISTRICT FIVE

The Board of County Commissioners is a governing body created for civil and political purposes which acts under powers given to it by the State. General duties include enacting resolutions and ordinances for the general health, safety and welfare of the residents of Nassau County; levying taxes when necessary to fund operations of the County government; and providing necessary services to safeguard the well-being and safety of the residents.

The Board meets on the second and fourth Mondays of each month at 6:00 p.m., and the third Wednesday of each month at 9:00 a.m. They also hold special meetings when necessary. Meetings are held in the Commission Chambers located at 96135 Nassau Place in Yulee (James S. Page Governmental Complex). All citizens are welcome to attend and participate in meetings. More information about the Board can be found on our official website: www.nassaucountyfl.com.

ECRWSS
NON-PROFIT ORG.
U.S. POSTAGE
PAID
PERMIT NO. 164
FERNANDINA BCH, FL

POSTAL PATRON

Supervisor of Elections Nassau County
P.O. Box 16269
Fernandina Beach, FL 32035-3122

YOUR LOCAL GOVERNMENT

IMPORTANT INFORMATION



A. Michael Hickox, Property Appraiser

James S. Page Governmental Complex
96135 Nassau Place, Suite 4, Yulee, FL 32097
www.NassauFLPA.com

Appraise Properties

It is the statutory responsibility of the Property Appraiser's Office to list and appraise all properties within the County every year. The Property Appraiser sets a value on your property based on current market conditions less assessment limitations and exemptions to determine the taxable value. All taxing authorities will then set a tax rate to determine the amount of taxes a property owner must pay.

Administer Exemptions – APPLY ONLINE!

Florida law allows several different property tax exemptions to qualifying residents. The most common being Homestead Exemption, which is a constitutional guarantee that reduces the taxable value of residential property for qualified permanent residents. Every person who has legal or equitable title to real property in the State of Florida, and makes that property their permanent home, is eligible to receive a homestead exemption of up to \$50,000. Other possible exemptions include: Senior Exemption, Widow(er) Exemption, Disability Exemption, Veteran's Exemption and First Responder's Exemption.

GIS Mapping & Addressing – MOBILE FRIENDLY!

The Geographic Information Systems (GIS) Mapping department is responsible for the maintenance and distribution of cadastral maps. This is the starting point for the development of the annual Tax Roll. Once the property is accurately mapped, it is made available for distribution through the GIS. Our GIS Department manages the base layer map of parcel data for the entire county. There are an additional 30 plus layers of other information, including: Aerials 2009-2017, 911 Addressing, Land Use & Zoning, Emergency Management – Evacuation Zones, Flood Zones and Recent Sales.

IMPORTANT EXEMPTION DATES

**JAN
01**

The status and conditions of your property on January 1st determine the property's value for the next tax year. January 1st is also the date that determines residency and ownership requirements to qualify for homestead exemptions.

Filing deadline for homestead and other exemptions. Filing deadline for classified use properties.

**MAR
01**

**APR
01**

Deadline for filing tangible personal property tax return.

MID-AUGUST

Truth in Millage (TRIM) / Notice of Proposed Taxes are mailed to property owners.



John M. Drew, Tax Collector

86130 License Road
Fernandina Beach, FL 32034
www.NassauTaxes.com

Dear Taxpayers,

We have the distinction to live in a country where property rights are respected. Here in Nassau County, we are blessed to live and raise our families in such a fine place! As your Tax Collector, it is my duty to process and mail tax notices each year. Remember, there are discounts for early payment. 4% in November, 3% in December, 2% in January and 1% in February.

In addition to basic property tax collection, we represent the Department of Highway Safety & Motor Vehicles, the Florida Fish & Wildlife Commission, the Department of Health, the Department of Agriculture & Consumer Services as well as the Department of Revenue. We collect Motor Vehicle, Vessel, and Mobile Home Fees, conduct Road Tests and issue Registrations, Titles, Driver Licenses, Hunting and Fishing Licenses and certified copies of FL Birth Certificates. In the last few years we've added Concealed Weapons Applications. You can make an appointment to renew or apply for a Concealed Weapons License at our Main Office.

Save on time, Go Online! Pay your property taxes or renew your vehicle registration from your phone or tablet. Please visit our website at www.nassautaxes.com for information on the wide range of services provided to our citizens.

Yours in service,
John M. Drew, MBA CFC, Tax Collector

Applying for a Florida

CONCEALED WEAPON or FIREARM LICENSE

at a Florida Tax Collector's office

01

License Renewal services are also available at approved Florida Tax Collector's Offices. Florida residents can now leave with their renewed license in hand for \$45, plus a \$12 convenience fee.

02

Paper Application packages are no longer needed when applying at a tax collector's office. The tax collector's office will electronically submit your application to FDACS for processing

03

Tax Collectors Offices are considered "Fast Track" locations. Submitting your new application at a tax collector's office will, in most cases, result in faster processing times.

04

Expedited processing services are available for honorably discharged veterans and military members.

05

You may already have completed training-completion of a hunter safety course, law enforcement firearms training or military firearms training is acceptable.

06

The responsibility for issuing a license still lies with FDACS. Direct any questions regarding the status of an application to FDACS at 850-245-5691.

Florida Department of Agriculture and Consumer Services, Division of Licensing
P.O. Box 6687, Tallahassee, FL 32314 Phone: 850.245.5691 • Fax: 850.245.5655

CHIEF FINANCIAL OFFICER, TREASURER, & AUDITOR

Provides the public with an independent check and balance on Nassau County's revenue, debt and spending. Performs unbiased accounting and auditing of funds to ensure every County expense is lawful and serves a public purpose. Invests and earns interest income on County funds to reduce the tax burden on the residents of Nassau County. Maintains financial records and produces all required financial statements and reports.



John A. Crawford

Clerk of the Circuit Court and Comptroller

RESPONSIBILITIES OF THE CLERK

COUNTY RECORDER

Maintains the Official Records of the County dating back to the 19th century. The Clerk electronically records documents such as mortgages, deeds, liens, judgments and marriage licenses and makes scanned images available online.

CLERK OF THE COURT

Protects the integrity of public records and public funds as an impartial third-party directly accountable to the citizens. Receives, processes and files all civil and criminal court documents; protects evidence; disburses all court fees, fines and costs; and provides the public with access to court records.

EX-OFFICIO CLERK TO THE BOARD OF COUNTY COMMISSIONERS

Documents and maintains the records and activities of all Nassau County Commission meetings and other government meetings; ensures accuracy and accessibility of meeting minutes and is the Clerk to the County's Value Adjustment Board.

"Preserving and Protecting the Public Trust is our Greatest Responsibility"

• ONLINE FORECLOSURE SALES

Bid on Nassau County foreclosed properties

• SEARCH COURT RECORDS

Civil, Criminal, and Traffic Court Records

• SEARCH FILE REPOSITORY

Minutes, Agendas, Ordinances, Resolutions and more

• SEARCH OFFICIAL RECORDS

Deeds, Mortgages, Judgments, Liens and more

• MY VAB

File and Check Status of Value Adjustment Board Petitions Online

• TRAFFIC TICKET PAYMENTS

Pay your traffic ticket online

ONLINE SERVICES SAVE A TRIP!

www.nassauclerk.com

LOCATIONS:

Open Monday - Friday 8:30 a.m. to 5:00 p.m.

Robert M. Foster Justice Center

76347 Veterans Way
Yulee, FL 32097
904.548.4600

Historic Courthouse

416 Centre St.
Fernandina Beach, FL 32034
904.491.6430

2018 NASSAU COUNTY VOTER GUIDE

REGISTER TO VOTE AND BECOME INFORMED

Vicki P. Cannon, Supervisor of Elections
96135 Nassau Place, Suite 3, Yulee, FL 32097 • www.VoteNassau.com
904.491.7500 • Toll Free: 1.866.260.4301 • Fax: 904.432.1400 • questions@votenassau.com

REGISTERING TO VOTE IS EASY

You **CAN** register to vote if:

- You are a citizen of the United States of America.
- You are at least 18 years of age (you may preregister at age 16).
- You are a legal resident of the State of Florida and of the county where you intend to vote.

You **CANNOT** register to vote if:

- You are not a citizen of the United States of America. (A lawful permanent resident cannot register or vote in Florida.)
- You have been convicted of a felony or adjudicated mentally incapacitated with respect to voting, unless and until your right to vote has been restored. For felony convictions, if you are not sure if your rights have been restored, contact the Office of Executive Clemency at 1.850.488.2952, email ClemencyWeb@fcor.state.fl.us or visit their website, www.FLrestoremyrights.com.

WHAT You will Need to Register:

You will need your Florida Driver License number, Florida ID number, or if you have neither, the last four digits of your Social Security number. If you have not been issued any of the numbers above, check the box next to "I have NONE of these numbers" on the Florida Voter Registration Application.

WHEN to Register:

You can register at any time. However, if you want to vote in an upcoming election, the deadline to register is the 29th day before that election.

WHERE to Register:

To register or update your voter record online visit RegisterToVoteFlorida.gov.

To register in person, simply complete a Florida Voter Registration Application at an authorized agency, which includes: any Supervisor of Elections Office, public libraries, Florida Driver License offices, any office that provides public assistance or serves persons with disabilities (centers for independent living, WIC and Florida Department of Children and Families Offices), and armed forces recruitment offices. You may also submit your voter registration information electronically at the same time as you get a new or renewed Florida Driver License or Florida ID. The electronic information will be forwarded to our office for processing.

If you register by mail, have never been issued a Florida Driver License, Florida ID, or Social Security number, you will be required to provide a copy of a current and valid identification, or indicate that you are exempt from the requirements at the time you register or prior to voting. Required forms of identification and exemptions are listed on the application.

Florida Voter Registration Applications are available at www.VoteNassau.com or an application can be mailed to you upon request. Applications are also available at fishing and hunting license locations, and various governmental agencies. These applications must be completed, signed, and returned to a Supervisor of Elections Office, the Florida Division of Elections, a driver license issuing office or a voter registration agency. Large print and Braille instructions are available at the Elections Office and applications are also available in Spanish.

WE'RE SOCIAL | FOLLOW US



[votenassaufl](https://www.facebook.com/votenassaufl)



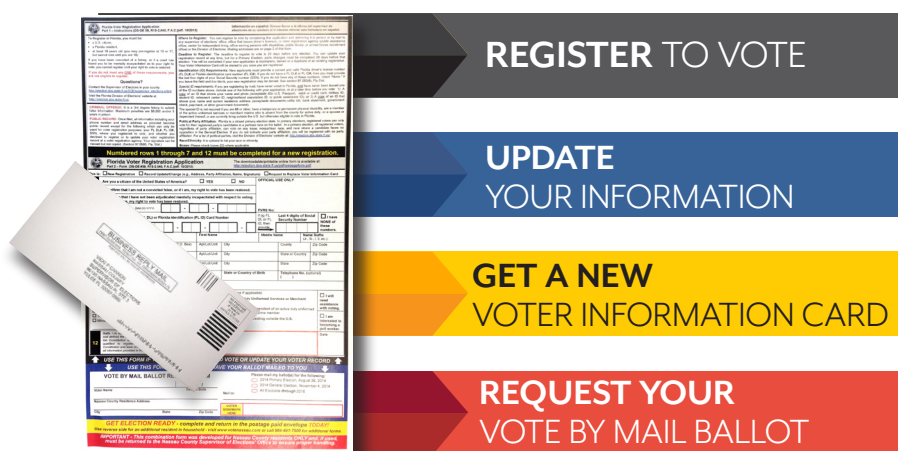
[votenassau](https://twitter.com/votenassau)



[votenassaufl](https://www.instagram.com/votenassaufl)



FLORIDA VOTER REGISTRATION APPLICATION AND VOTE BY MAIL BALLOT REQUEST FORM (SEE INSERT IN THIS GUIDE)



SIMPLE & QUICK
NO POSTAGE NEEDED!
postage paid envelope provided
DOUBLE SIDED!
two per household



YOUR VOTER INFORMATION CARD

Once registered, a Voter Information Card will be mailed to you. This card provides your precinct number and polling location, as well as other information. If you do not receive your card within two weeks of registering, it is important that you contact the Elections Office immediately to ensure you are registered.

If your polling place or precinct changes, you will be mailed a new Voter Information Card with updated information on where to cast your ballot on Election Day. If you need a replacement card, complete a voter registration application or provide our office with a signed, written request. **VERY IMPORTANT:** When you receive your Voter Information Card, verify all information is correct, especially your name, address, party affiliation and date of birth.

CHECK YOUR RECORD ONLINE



Visit www.VoteNassau.com and select *My Voter Record* to:

- Review/update your voter information
- Request a Vote by Mail ballot
- Track your Vote by Mail ballot
- Check the status of your provisional ballot
- Locate your polling place
- View your voter specific sample ballot
- Find election information

UPDATE YOUR VOTER RECORD IN A SNAP!



Signature: The signature in your voter record is used to verify the signature on your Vote by Mail Voter's Certificate and/or Provisional Ballot Certificate **and** must match in order for your ballot to count. It is also used to verify your signature on petitions.

Name: Anytime your name has legally changed – let us know.

Address: Your residence address determines your precinct and polling place - keep it current and avoid delays!

Party Affiliation: Florida is a Closed Primary State. See page 4 in this guide for more information.

To update your signature, you must complete a Florida Voter Registration Application. By completing, signing and returning the enclosed Application, you can ensure that your signature and all other information is current in your voter record.

To update your name, address, party affiliation, etc.:

- **Online** at www.VoteNassau.com - Click Register to Vote and use Florida's online registration application. You will need your Florida driver license or Florida ID card and issue date, and the last four digits of your social security number to complete the application. If you do not have any of the above, you may still use the online system to prefill the application. However, you will have to print, sign and then mail or deliver your completed application to the Elections Office.
- **Email** questions@votenassau.com (include your date of birth)
- **Call** 904.491.7500 or 1.866.260.4301 (Toll Free)
- **Mail** a signed, written notice with your change(s) to the Elections Office (include your date of birth)

BE ELECTION READY

WHAT'S ON THE 2018 BALLOT

OFFICES UP FOR ELECTION

FEDERAL, STATE, AND MULTI-COUNTY

- United States Senator
- United States Representative, 4th Congressional District
- Governor and Lieutenant Governor
- Attorney General
- Chief Financial Officer
- Commissioner of Agriculture
- State Senator, District 4
- State Representative, District 11
- Judges of the Circuit Court, 4th Judicial Circuit
- Justices of the Supreme Court (Up For Merit Retention)
- Judges of the First District Court of Appeal (Up For Merit Retention)

COUNTY AND DISTRICT

- County Commissioner, Districts 2 and 4
- School Board Member, Districts 1, 3 and 5
- Ocean, Highway & Port Authority Member, Districts 3, 4 & 5
- Amelia Concourse Community Development District, Seats 2 & 3
- Amelia Island Mosquito Control Board Member, Groups 2 & 3
- Amelia National Community Development District, Seats 2 & 5
- Amelia Walk Community Development District, Seats 1 & 4
- Heron Isles Community Development District, Seats 2 & 4
- River Glen Community Development District, Seats 3 & 4
- Soil and Water Conservation District Supervisor, Groups 1, 2, 3 & 5

MUNICIPAL

- City of Fernandina Beach: City Commissioner, Groups 4 & 5
- Town of Callahan: Mayor, Treasurer, Clerk, 2 Town Council Members
- Town of Hilliard: Mayor, 2 Town Council Members

CONSTITUTIONAL AMENDMENTS

- Increased Homestead Property Tax Exemption
- Limitations on Property Tax Assessments
- Voter Control of Gambling in Florida
- Voting Restoration Amendment
- Supermajority Vote Required to Impose, Authorize, or Raise State Taxes or Fees
- Rights of Crime Victims; Judges
- First Responder and Military Member Survivor Benefits; Public Colleges and Universities
- School Board Term Limits and Duties; Public Schools
- Prohibits Offshore Oil and Gas Drilling; Prohibits Vaping in Enclosed Indoor Workplaces
- State and Local Government Structure and Operation
- Property Rights; Removal of Obsolete Provision; Criminal Statutes
- Lobbying and Abuse of Office by Public Officers
- Ends Dog Racing

FLORIDA HOLDS CLOSED PRIMARY ELECTIONS

Florida is a closed primary state. That means that only voters who are registered members of a political party which has candidates on the primary ballot may vote for that party's candidates in a primary election.

Voters with no party affiliation (NPA) are not eligible to vote for party candidates in a primary election. However, all qualified voters regardless of party affiliation or no party affiliation can vote in the following races appearing on a primary election ballot:

- All candidates in the same race have the same party affiliation and the winner will have no opposition in the general election. (This is known as a Universal Primary Contest.)
- Nonpartisan judicial and school board offices.
- Nonpartisan special districts and other local offices.
- Local referendum questions.

In a general election, all registered voters may vote regardless of party affiliation.

OUR MISSION: YOUR VOTE

Nassau County provides an online ballot access system for absent uniformed service members, their dependents, and citizens living outside the U.S. This system cuts ballot delivery time in half as voters can access their ballot by visiting www.OurMissionYourVote.us.

ACCESSIBLE VOTING EQUIPMENT FOR VOTERS WITH DISABILITIES

The **AutoMARK**, an ADA-accessible voting machine, will be available at each early voting location and Election Day polling place. This touchscreen ballot-marking device uses a paper optical scan ballot. It provides voters with disabilities the following options:

- Audio function with headset
- Braille keypad
- Zoom-in large print feature
- Sip-and-puff device
- Two-switch paddle device.
- Adjustable contrast and text size



PROVISIONAL BALLOTS

If you do not provide acceptable photo and signature identification at the polls, or your eligibility to vote cannot be determined you may vote a provisional ballot. After casting a provisional ballot, you will be provided a written notice of rights with instructions on how to present written evidence supporting your eligibility to vote to the Supervisor of Elections. The notice also includes information on how to determine if your provisional ballot was counted following the election. You must cast your ballot in the proper precinct for it to count.

VOTER'S BILL OF RIGHTS:

Each registered voter in Florida has the right to:

- Ask for and receive assistance in voting.
- An explanation if his or her registration or identity is in question.
- Bring proper identification to the polling place.
- Familiarize himself or herself with the operation of the voting equipment in his or her precinct.
- Cast a vote if he or she is in line at the official closing of the polls in that county.
- Respect the privacy of other voters.
- Know the location of his or her polling place and its hours of operation.
- Vote on a voting system that is in working condition and that will allow votes to be accurately cast.
- Ask questions, if needed.
- Maintain with the office of the supervisor of elections a current address.
- Cast a provisional ballot if his or her registration or identity is in question.
- Vote and have his or her vote accurately counted.
- Make sure that his or her completed ballot is correct before leaving the polling place.
- Receive written instructions to use when voting and, upon request, oral instructions in voting from elections officers.
- Report any problems or violations of election laws to the supervisor of elections.
- Treat election workers with courtesy.
- Vote free from coercion or intimidation by elections officers or any other person.
- Receive up to two replacement ballots if he or she makes a mistake prior to the ballot being cast.
- Familiarize himself or herself with the candidates and issues.

VOTER'S RESPONSIBILITIES

Each registered voter in Florida should:

- Ask for and receive assistance in voting.
- An explanation if his or her registration or identity is in question.
- Bring proper identification to the polling place.
- Familiarize himself or herself with the operation of the voting equipment in his or her precinct.
- Cast a vote if he or she is in line at the official closing of the polls in that county.
- Respect the privacy of other voters.
- Know the location of his or her polling place and its hours of operation.
- Vote on a voting system that is in working condition and that will allow votes to be accurately cast.
- Ask questions, if needed.
- Maintain with the office of the supervisor of elections a current address.
- Cast a provisional ballot if his or her registration or identity is in question.
- Vote and have his or her vote accurately counted.
- Make sure that his or her completed ballot is correct before leaving the polling place.
- Receive written instructions to use when voting and, upon request, oral instructions in voting from elections officers.
- Report any problems or violations of election laws to the supervisor of elections.
- Treat election workers with courtesy.
- Vote free from coercion or intimidation by elections officers or any other person.
- Receive up to two replacement ballots if he or she makes a mistake prior to the ballot being cast.
- Familiarize himself or herself with the candidates and issues.

NASSAU COUNTY VOTER GUIDE

BEFORE GOING TO VOTE

REVIEW YOUR VOTER INFORMATION CARD

Your Voter Information Card provides your precinct number and polling place, as well as other information contained in your voter registration record. If you did not receive your card, contact the Supervisor of Elections Office. Should your precinct or polling place change, or if you update your voter registration record, you will be mailed a new card. To avoid delays and paperwork at the early voting site or polling place, be sure your address is current in your voter registration record. Inform us of any changes to your registration information by visiting our website or contacting our office.



YOUR SAMPLE BALLOT REVIEW IT, MARK IT, TAKE IT TO THE POLLS

Your sample ballot is based on your legal residence address, and party affiliation (in primary elections) and will be mailed approximately three weeks prior to Election Day. If you would like your sample ballot emailed, please notify the Supervisor of Elections Office. Your sample ballot will contain your specific ballot style and information regarding voting opportunities. It may also be used to research candidates and issues. You may mark your sample ballot and take it to the early voting site or polling place for your reference.

WHEN AND WHERE TO VOTE

On Election Day, polls are open from 7 a.m. to 7 p.m. You must vote at your assigned polling place. Contact the Supervisor of Elections Office or visit our website if you need confirmation on where your polling place is located or have questions. There are four Early Voting locations in Nassau County. Please see the next page for dates and times.

WHAT TO BRING

If you choose to vote in person during the early voting period or on Election Day, you must present your **CURRENT** and **VALID** photo and signature identification (ID). A voter may present two separate forms of ID, one with a photo on it from the list below and another with a signature (may or may not be from the list below). Example: Photo on Student ID and signature on credit card; or photo on Military ID and signature on a library card are acceptable.

The photo ID must be from the list below:

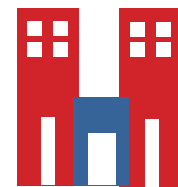
- Florida Driver License
- Florida ID Card issued by the Department of Highway Safety and Motor Vehicles
- United States Passport
- Debit or Credit Card
- Military ID
- Student ID
- Retirement Center ID
- Neighborhood Association ID
- Public Assistance ID
- Veteran health identification card
- A license to carry a concealed weapon or firearm
- Government issued Employee ID Card.

A Voter Information Card

may not be used as ID at the polls.

If you do not present the required ID at the polls, you may vote a provisional ballot.

AT THE POLLING PLACE



1

CHECK-IN

You will be greeted by a polling place deputy and directed to a voter check-in station. Provide your current and valid photo and signature ID. You will be asked to sign the electronic signature pad or a voting pass. Your paper ballot will then be provided to you in a secrecy sleeve.

DURING EARLY VOTING- your specific ballot style will print on demand after Check-in. If you are a person with a disability, or cannot read or write and would like someone to help you with the voting process, you can designate someone of your own choice (except your employer or an agency of your employer, or an officer or agency of your union) to help you. Election officials may also provide assistance. If you would like assistance, please advise the Check-in Operator.

PROCEED TO THE VOTING BOOTH

Once you are at a voting booth, remove your ballot from the secrecy sleeve and mark your selection(s). Instructions are provided on the secrecy sleeve and the ballot. If you make a mistake on your ballot, ask an election worker for assistance. By law, you may receive up to two replacement ballots, or a total of three ballots.

2

HOW TO VOTE

Marksense ballot (paper ballot)

All voting is by Marksense ballot which uses a marking device for the purpose of designating ballot selections and an optical scanner as the tabulator.

- To vote, completely fill in the oval to the left of your choice.



- For write-in candidates, fill in the oval to the left of the words *write-in*, and write the qualified write-in candidate's name on the line.

A message will be displayed on the tabulator screen if you have overvoted any of the races or inserted a blank ballot. However, a message will not be displayed if you have undervoted any race. The tabulator will count all properly marked races.

OVERVOTE

If you vote for more candidates in a race than what is indicated in the title of the race, your vote in that race will not count. This is called an overvote.

UNDervOTE

You may choose not to vote on a *Vote for One* race or not to make multiple choices on a *Vote for Two* (or three, or four) race. This is called an undervote.

3

TAKE BALLOT TO THE TABULATOR

After reviewing your ballot, insert it into the tabulator. When you see,

“Thank you for voting. Your ballot has been counted.”

on the screen, you have completed the voting process.



You will receive an *I Voted* sticker and you can exit the polling place with confidence that **your vote counted**.

2018 ELECTION INFORMATION

AUGUST 28th
PRIMARY
ELECTION



Registration and
Party Change Deadline

VOTER REGISTRATION DEADLINES

- Voter registration deadline is 29 days prior to any election.
- You must be registered with a political party in order to vote in that party's primary election.
- To be effective for the Primary Election, a party change must be made at least 29 days before the election.

NOVEMBER 6th
GENERAL
ELECTION



Registration
Deadline

THREE WAYS TO VOTE

BY MAIL

2018 VOTE BY MAIL
REQUEST
DEADLINES

PRIMARY
ELECTION

AUG
22

GENERAL
ELECTION

OCT
31

To Request a Vote by Mail ballot
visit our website at

www.VoteNassau.com

or call our office at
904.491.7500

EARLY

EARLY VOTING
DATES, TIMES & LOCATIONS

PRIMARY ELECTION

AUG
17-25

10 am - 6 pm*

GENERAL ELECTION

OCT NOV
26 - 03

10 am - 6 pm*

*Subject to change

ELECTION
DAY

AT YOUR PRECINCT/
POLLING PLACE

PRIMARY
ELECTION

AUG
28

GENERAL
ELECTION

NOV
06

7 AM-7 PM

You may vote in person at your
polling place on Election Day
(refer to your Voter Information
Card). Polls are open from 7 a.m.
to 7 p.m. You must vote in the
precinct of your legal residence.

REQUESTING A MAIL BALLOT: You may request a Vote by Mail Ballot by contacting our office in person, by mail, phone, fax, email, or on our website.

Requests for a ballot to be mailed must be received no later than 5 p.m. on the sixth day before the election.

VOTING YOUR MAIL BALLOT: To vote your mail ballot, use a black ball point pen to completely fill in the oval next to each selection on your ballot. If you make a mistake call our office to request a replacement ballot.

RETURNING YOUR VOTED MAIL BALLOT: To return your voted mail ballot, insert it into the secrecy envelope, then insert the secrecy envelope into the return envelope. Seal the return envelope.

**BE SURE TO SIGN AND DATE THE
BACK OF YOUR RETURN ENVELOPE.**

It must be received in the Supervisor of Elections Office no later than 7 p.m. on Election Day and may be returned by mail or hand delivery. Mail ballots may not be forwarded, so make sure we have your correct address. If returning by mail, place the required postage on the return envelope. If returning in person, deliver to the elections office by 7 pm on Election Day.

TRACK YOUR BALLOT
www.VoteNassau.com

CALLAHAN COUNTY BUILDING
45401 Mickler Street
Callahan, FL 32011

JAMES S. PAGE GOVERNMENTAL COMPLEX
96135 Nassau Place
Yulee, FL 32097

ATLANTIC RECREATION CENTER
2500 Atlantic Ave
Fernandina Beach, FL 32034

HILLIARD COMMUNITY CENTER
37177 Pecan Street
Hilliard, FL 32046



**WE NEED
ELECTION WORKERS**

Be a part of the upcoming 2018
Elections. Earn money for a charity
or yourself and play a key role in
upcoming elections.

Complete an application online.
www.VoteNassau.com

AT YOUR FINGERTIPS...EASY AS 1, 2, 3!

By completing, signing and returning the enclosed application and ballot request form, YOU CAN:

- 1....Register to vote!
- 2....Update your **signature, name, address, political party, etc.** in your voter record. Know for sure your voter record is current—return the application today!
- 3....Request a **Vote by Mail ballot**. In addition to candidate races, there will be **13** Constitutional Amendments on the 2018 General Election ballot—vote conveniently and comfortably in your home—request a ballot be mailed today!

The enclosed double-sided application and ballot request form is designed for **up to two people**...Need more? Call 904.491.7500. Return in the enclosed envelope today—**No postage needed!**



A MESSAGE FROM... YOUR BOARD OF COUNTY COMMISSIONERS

Did you know that Nassau County Government works year-round to ensure that they are prepared for response and recovery in the event of a disaster? In addition to updating policies and procedures, government staff participates in drills so that each person understands their role and what will be expected of them should the Emergency Operations Center be activated. Examples of responsibilities include coordination of emergency shelters, transportation, law enforcement, and procurement of supplies. Just to name a few!

As soon as there is a threat of a hurricane to our area, emergency personnel and essential staff are participating in conference calls with the Governor and National Hurricane Center where they discuss evacuation plans for the entire State, as well as how to address potential gas shortages and other issues that may arise. All of this is going on behind the scenes while you watch anxiously to see how the storm will affect you. Though Nassau County has been faced with two major hurricanes over the past two years, we have been extremely fortunate that neither storm caused catastrophic property damage. The cost to the taxpayers, on the other hand, has been significant. For Hurricane Matthew, Nassau County spent more than \$2.2 million for reimbursements, wages, debris removal, and damages to County property and equipment. To date, the County has only received \$52,224 in reimbursement from FEMA. Projections related to Hurricane Irma is approximately \$4.8 million, of which debris removal totaled \$3.9 million. Nassau County is still filing FEMA forms necessary to make these claims. It is a long process however we will continue to pursue these reimbursements. Until these are received, the County's finances will remain strained. Both current and future projects will be affected until funds are replenished to a level prior to the storm.

LOCAL CONSERVATION INFORMATION



NASSAU COUNTY RECYCLING CENTERS:

*These sites are ADA Accessible

Full Service: Callahan
West Nassau Convenience
Recycling Center *
46026 Landfill Road
Callahan, FL 32011
Telephone: 904.530.6700

Self Service:
Amelia Island*
(near Fernandina Beach
Airport)
3163 Bailey Road
Fernandina Beach, FL 32034

Bryceville
7282 Motes Road
Bryceville, FL 32009

Yulee *
86142 Goodbread Road
Yulee, FL 32097

KEEP NASSAU BEAUTIFUL

P.O. Box 16244, Fernandina Beach, FL 32035
904.261.0165 • knb@keepnassaubeautiful.org
www.KeepNassauBeautiful.org

WHAT CAN I DO TO RECYCLE?



Cardboard/Paper/Junk Mail
• Recycling 1 ton of cardboard can save enough water to wash 230 loads of laundry.

Aluminum and Steel Cans
• Recycling 1 ton of aluminum saves enough energy to charge over 2 million smart phones.

Plastic Bottles and Caps
• Recycling 1 ton of plastics equal to saving enough gas to fill up the average car 90 times.



NO Styrofoam
• Recycling styrofoam would use more energy than it could save.

NO Used Pizza Boxes
• Contaminants from just one pizza box is enough to send an entire load of recyclables to the landfill.

NO Plastic Bags
• It only takes one plastic bag to entangle in machines and halt the system for hours.

HOW LITTER HAPPENS...

IT GETS THROWN

- Litter shouldn't be thrown from a vehicle.
- Avoid throwing litter out of vehicle windows by keeping a litter bag in your car at all times.

IT GETS BLOWN

- Litter can blow out of a truck bed without the driver knowing.
- Avoid putting anything in a truck bed that might blow out on the road, and cover all loads to ensure that nothing can blow out.
- Unsecure loads can cause accidents

SECURE YOUR LOAD! IT'S THE LAW

F.S. 403.413

CIGARETTE BUTTS...



“ Are the most littered item in the world, adding up to **1.69 million** pounds of toxic litter each year. ”

DON'T LEAVE YOUR BUTTS BEHIND!

HOUSEHOLD HAZARDOUS WASTE COLLECTION**

Store your household hazardous waste safely and bring it to a Keep Nassau Beautiful Household Hazardous Waste Collection event. In partnership with Nassau County, events are typically held twice each year, in April and September. The types of items accepted during the collection drive include: pesticides, insecticides, fertilizers, paints, solvents, paint thinners, radiator fluid used oil/lubricants, oil filters, gasoline/fuels, pool chemicals, fluorescent bulbs, electronics, computers, TVs, batteries, household cleaners, corrosives, propane tanks, aerosol cans, and medications. Contact Keep Nassau Beautiful for dates and locations. **Events are for residents of Nassau County. Quantities may be limited.

LATEX PAINTS AND STAINS

It's best to dispose of paint and stain at the Household Hazardous Waste Cleanup. If you can't make it to the clean up event, you can dispose of latex paints and stains by solidifying them. Add cat litter to the remaining latex paint or stain. Stir the cat litter into the paint/stain until it thickens and will not spill. Leave the lid off and allow the mixture to harden. Once hardened you may throw the dried paint/stain in the can in the garbage.

WATERING RESTRICTIONS

Time of Year	Homes with ODD numbered or no addresses	Homes with EVEN numbered addresses	Nonresidential Properties
Daylight Saving Time	WEDNESDAY/ SATURDAY	THURSDAY/ SUNDAY	TUESDAY/ FRIDAY
Eastern Standard Time	SATURDAY	SUNDAY	TUESDAY

Water **ONLY** when needed and **NOT** between 10 a.m. and 4 p.m.

The St. Johns River Water Management District's watering restrictions are designed to ensure the efficient use of water for landscape irrigation. The restrictions allow enough water to maintain healthy landscapes year-round. The mandatory restrictions specify the time when watering may occur, the amount of water that may be applied, and the days when watering may occur for residential and nonresidential locations. These days depend on whether the address ends in an odd or even number, and on the time of year. Restrictions apply to private wells and pumps, ground or surface water and water from public and private utilities. Information provided by St. Johns River Water Management District • 904.730.6270 • www.sjrwmd.com



Bill Leeper, Nassau County Sheriff

77151 Citizens Circle, Yulee, FL 32097
www.NassauSO.com

SCAM ALERT!

IF YOU ARE PURCHASING A PRE-PAID CARD TO:

- Bail a relative/ friend out of jail
- Pay JEA to avoid disconnection
- Claim lottery winnings
- Pay IRS to avoid jail or prosecution
- Unlock a computer which has been frozen

Then you have been **targeted by SCAMMERS.**

All of these companies and institutions **DO NOT** and **WILL NOT** ask you to give them credit card numbers over the phone, and **WILL NOT** request a pre-paid money gram or card or ask you to complete a wire transfer.

If you have been targeted by this scam, you should also contact the Federal Trade Commission and use their complaint assistant at www.FTC.gov. Please add “Telephone Scam” to the comments of your complaint. If you have already sent a money gram, wired money or sent gift or credit cards, contact the Nassau County Sheriff’s Office at 904.225.5174.

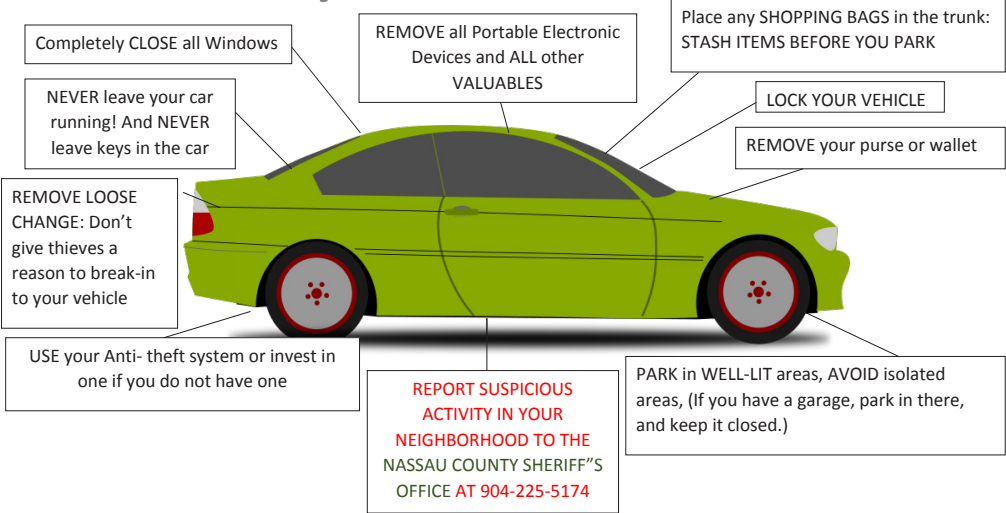
Dial 9-1-1 in case of an Emergency!



Car break-ins?

Don’t be a victim!

Ten ways to REDUCE theft from Auto



4 TIPS TO ACHIEVE CYBER SECURITY

USE COMPLEX PASSWORDS WHERE POSSIBLE

Most password fields require some combination of Uppercase, Lowercase, Number and Special Character. This criterion is easily met by writing a sentence such as “I adopted my dog Annie in 2017!” This is a long password of 25 characters but is easily remembered and is also much more secure than Annie2017. The longer the sentence, the more secure the password.

REMEMBER, THEY WON’T CALL YOU

The company that made your computer or operating system isn’t going to call you to inform you there’s something wrong with your PC. These are scams designed to allow someone to log into your computer remotely to tell you there’s some problem with the PC and you need their software to fix it or in the worst cases to steal information directly from the computer.

BEWARE OF PHISHING SCAMS

These are scams where someone may send a link or attachment in an email trying to get you to click on it to fish for information. They may ask you to enter some form of information such as user names or passwords. If you get an email that seems slightly suspicious, go to the site that sent the email and log in there directly, DO NOT go through the links in the email.

DON’T CLICK THE ADS

Say you read an article on your favorite news website, then at the bottom you see an article suggestion saying some small company is disrupting a billion-dollar industry. This is called click bait, websites sell ad space on their pages and companies can buy this space to place their content. The goal is for you to click that link and navigate to their page where they sell their own ad space or on some more dangerous sites they may attempt to get you to download software to your PC that is often laden with viruses or more ads.



8 COMMON SIGNS OF TERRORISM

1. Surveillance of potential targets.
2. Eliciting information about potential targets.
3. Testing security of potential targets by trespassing or leaving unattended bags to gauge response times.
4. Funding their actions through committing other crimes. Large cash purchases or solicitation of fraudulent donations may signal trouble.
5. Acquiring supplies through committing other crimes such as theft of vehicles and uniforms, or use of forged identification.
6. Impersonation of First Responders, Mail Carriers & Company Employees to gain access to potential targets.
7. Rehearsals may measure police and medical response times and tactics.
8. Deployment of supplies and equipment, thus putting the plan into action.



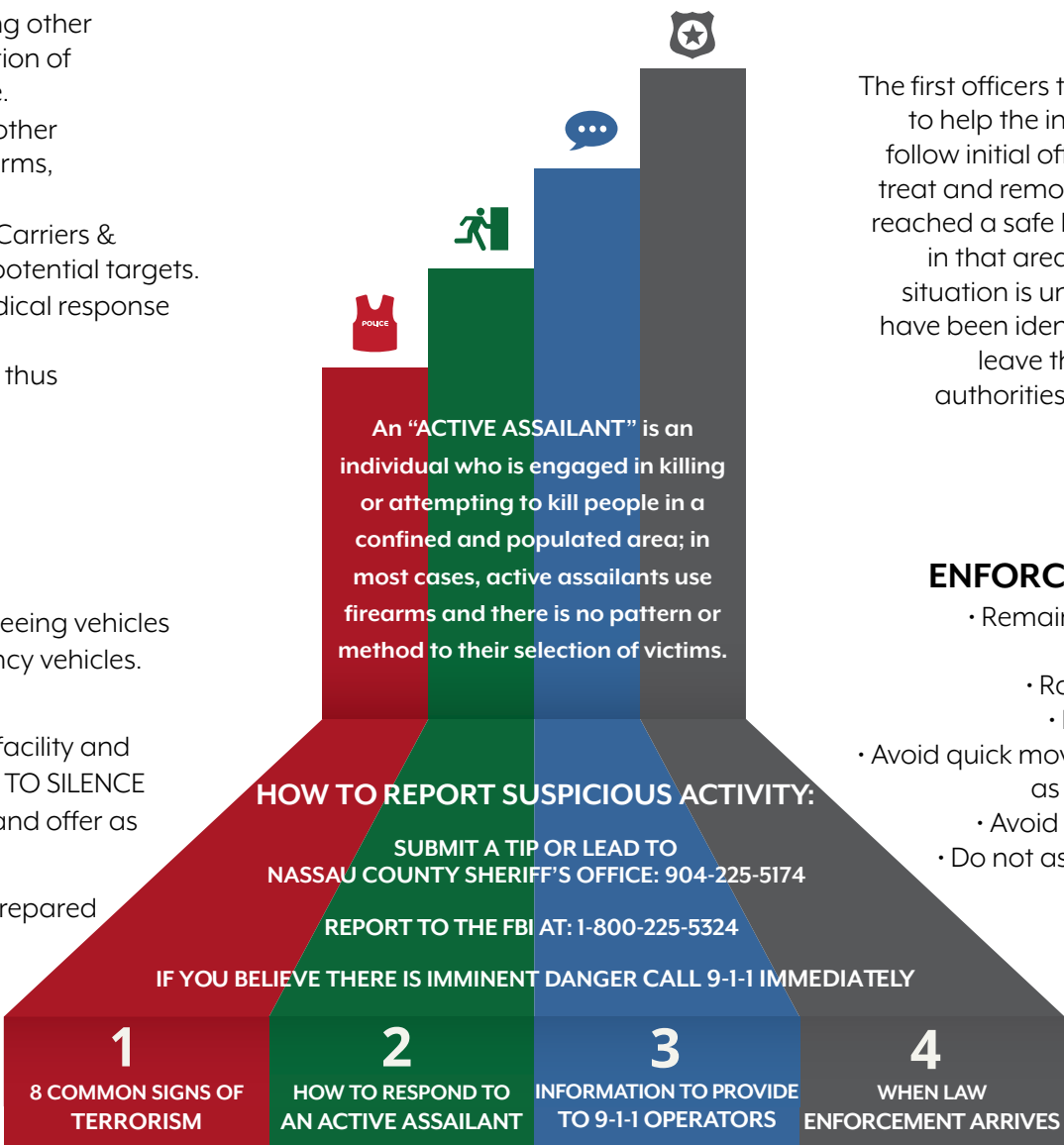
HOW TO RESPOND TO AN ACTIVE ASSAILANT

RUN: If possible leave the area on foot so fleeing vehicles don’t block access for responding emergency vehicles. Help others around you escape if possible.

HIDE: Lock yourself in the nearest room or facility and barricade the door from inside. REMEMBER TO SILENCE YOUR PHONE! Call 9-1-1 if it is safe to do so and offer as much information as you can.

FIGHT: If you encounter the assailant, be prepared to defend yourself, but only as a last resort. Improvise weapons or throw items at the assailant. Attempt to incapacitate the assailant. Commit to your actions... your life depends on it!

ACTIVE ASSAILANT REFERENCE GUIDE



INFORMATION TO PROVIDE TO 9-1-1 OPERATORS

- Location of the assailant
- Number of assailants
- Physical description of assailants
- Number of and type of weapons
- Number of potential victims

The first officers to arrive on scene will not stop to help the injured. Expect rescue teams to follow initial officers. These rescue teams will treat and remove the injured. Once you have reached a safe location, you will likely be held in that area by law enforcement until the situation is under control, and all witnesses have been identified and questioned. Do not leave the area until law enforcement authorities have instructed you to do so.

WHEN LAW ENFORCEMENT ARRIVES

- Remain calm and follow instructions
- Drop items in your hands
- Raise hands and spread fingers
- Keep hands visible at all times
- Avoid quick movements toward officers, such as holding on to them for safety
- Avoid pointing, screaming or yelling
- Do not ask questions when evacuating

FIREWISE COMMUNITIES/USA



Firewise Communities/USA is a program recognizing communities or neighborhoods that demonstrate the spirit and willingness to take responsibility as a partner in wildfire protection. -It is a way to help prevent and reduce losses by applying a few Firewise principles. The program is administered in Florida by the Florida Forest Service. The first step a community or neighborhood must do is recognize that they have a problem. Subsequent steps include establishing a working group or committee of homeowners to motivate their neighbors, find resources and contact local fire prevention experts. The community of Nassau Oaks held its ninth annual Firewise Communities Cleanup Day on Saturday, September 23, 2017. During this event, 32 volunteers spent the day removing flammable vegetative debris from around five home sites and along the community's entrance road. Nassau Oaks volunteer firefighters, Florida Forest Service forest rangers, community residents, cub scouts and parents from Baldwin Troop #364 put in a total of 129 hours of sweat equity to make the day an enormous success. Your community can be Firewise. Look on the web at <https://www.nfpa.org/Public-Education/By-topic/Wildfire/Firewise-USA/Become-a-Firewise-USA-site> or contact the Florida Forest Service at 904.266.8362 for details.



THE FLORIDA WILDLAND FIRE SEASON

Residents and firefighters in Florida must be vigilant year-round for potential wildfires. There is no particular wildfire "season" in Florida. There are conditions which make forested areas more susceptible to ignition. The Florida Forest Service, along with local, state, and federal agencies, monitor weather, humidity, drought, wind, and natural fuel conditions in an effort to predict when fires are more likely to occur, as well as warn the public and the first responders. Wildfires consume hundreds of homes in the United States every year. Studies show that 80 percent of these homes could have been saved if owners had followed a few fire-wise safety practices. Fire departments all over the state use every means possible to protect lives, homes, and property from the ravages of wildfire. But, it is important to remember, the number of firefighters and firefighting equipment is limited; not every home will be saved in a major wildfire.

FIREWISE/ USA HOTLINES:

Assistance & Information: 1.800.435.7352

Arson Hotline: 1.800.342.5869

Plant Industry Helpline: 1.888.397.1517

Ready, Set, Go!

Step 1: Take action yourself using RSG

Use the Ready, Set, Go! (RSG) Program information and tools to begin your personal wildland fire preparedness efforts.

Ready – Be ready.

Take personal responsibility and prepare long before the threat of a wildland fire so your property is ready to sustain the threat. Create defensible space by clearing brush away from structures. Use fire-resistant landscaping and harden structures using fire-safe construction measures. Assemble emergency supplies and belongings in a safe place. Plan escape routes and make sure all those staying on the property are aware of these plans.

Set – Be alert.

Put together a 'go kit'. Learn how to receive and stay aware of the latest news and information on the fire from local media, fire departments, and public safety agencies. Prepare your personal wildland fire action plan.

Go! – Act early!

Follow your personal wildland fire action plan. Doing so will not only support your safety, but will allow firefighters to best maneuver resources during response.

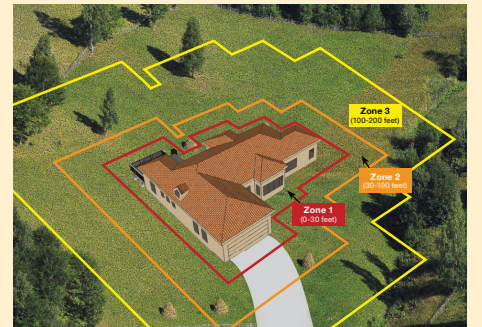
Defensible Space – Increases your safety and reduces fire damage!

Defensible space is a buffer zone created by removing weeds, brush and other natural vegetation between structures and the wildland-urban interface (WUI). Creating defensible space can decrease fire damage to structures and allow space for firefighting operations.

Landscaping plans that include non-combustible materials or fire-resistant plants and regular maintenance can contribute to the creation of defensible space.

Special consideration should be given to wind-driven embers which can travel up to a mile ahead of the flame front. Take care to regularly inspect or replace outside screens and ventilation points.

A hardened home not only includes quality defensible space, but fire-resistant construction materials. Consider implementing an 'upgrade plan' with materials to potentially decrease fire damage to your home. For more information on hardening your home, visit www.iafc.org/CWR and www.disastersafety.org.



IAFC's Community Wildfire Readiness and associated programs are funded in cooperation with the USDA Forest Service. **In accordance with Federal law and U.S. Department of Agriculture policy, this institution is prohibited from discriminating on the basis of race, color, national origin, sex, age, or disability. (Not all prohibited bases apply to all programs).** To file a complaint alleging discrimination, write USDA, Director, Office of Civil Rights, 1400 Independence Avenue, SW, Washington DC 20250-9410 or call toll free voice (866) 632-9992, TDD (800) 877-8339, or voice relay (866) 377-8642. USDA is an equal opportunity provider and employer.

My Personal Wildland Fire ACTION PLAN

Residential Safety Checklist

Ready (Before the fire occurs)

- Ensure the property's address is clearly marked and visible from the street.
- Create defensible space around all structures.
- Create and follow a maintenance plan to keep property mowed and clean of vegetation debris and loose, combustible materials.
- Create an information packet to add to your 'go kit,' which includes:
 - Emergency and non-emergency phone numbers
 - Phone numbers or websites to sign up for local notification systems
 - A list of local news and radio stations
 - Phone numbers for local maintenance contractors
 - Locations of electrical and natural gas shut off's
 - A map marking all neighborhood exits
- Become familiar with area roads, including all exit routes from your immediate area.
- Sign up with local agencies to receive emergency notifications.
- Reinforce the importance of preparing for and maintaining situational awareness of wildland fire threats with everyone in the home.
- Consider participating in fuel hazard mitigation programs in your area.

Set (As the fire approaches)

- Complete and practice your personal action plan.
- Assemble a 'go kit' and include items, such as:
 - Prescription medications
 - Emergency supplies
 - Your information packet
 - Chargers for electronic communication devices
- Stay alert and remain aware of the situation – monitor local radio or television stations for updates.
- Consider turning off electricity and natural gas/heating fuel at the shut-off point if fire threat is imminent.

Go! (Act early)

- Get your 'go kit' and leave well before the threat approaches, following an accessible exit route.
- Use your personal action plan for guidance.
- Cooperate with local authorities during evacuation & re-entry processes.

Ready, Set, Go!

www.wildlandfireRSG.org

BE PREPARED



ALL DISASTERS BEGIN AND END AT THE LOCAL LEVEL

IS YOUR “GO-KIT” READY?

When a wildfire is raging, a tropical storm is bearing down, or a tornado is on the horizon, it’s past time to be thinking about all the things you should have done to protect your home and finances from disaster. Get things ready now. You need a plan and supplies. If you have to evacuate, you need to be able to carry all of the stuff you’ll need while you are away, so build a “go-kit” of essentials (things you would need camping in a tent for a week) - they’ll probably fit in a five-gallon bucket. After a disaster strikes you’ll need supplies to get you through a few days without any power, water, or outside help such as a home disaster supply kit with non-perishable food, clean water, medicines, dry clothes, flashlight, tools, gloves, bandages, bug spray, etc.

IS YOUR HOME WIND & WILDFIRE READY?

You need to prepare your home to mitigate the damaging effects of natural disasters. The U.S. Forest Service recommends establishing a “defensible space” around your home to reduce its vulnerability to fire. Reducing debris and clutter around homes also keeps those items from becoming missiles in high winds. Make sure structures are well-anchored and the “envelope” is hardened to withstand straight-line winds, cyclones, and tornadoes. Roof joists need bracing and ties for whole-house stability. Doors, windows, and shutters should be high-impact-resistant to protect against flying debris.

IS YOUR HOME FLOOD READY?

Flood risk in Florida is high; do you know how high flood waters can get and how water flows around your home? Take action now to safeguard your property by elevating whatever you can. Raise electrical service equipment and outlets a foot above the 100 year flood level. You should also anchor outdoor equipment, like gas tanks, air conditioning units, and generators, off of the ground as well. Install a gate valve to prevent sewage back flow. If your neighborhood floods frequently, consider raising your home, installing foundation vents, or extra sealant and coatings to protect walls and floors. When water is rising, clear gutters and drains, shut off electricity at the breaker panel, move furniture and rugs off the floor, consider putting appliances up on blocks, and put important belongings and documents into waterproof containers. Know what your homeowner/renter’s insurance and automobile policies cover (replacement costs or current “actual cash value”) and what they do not. Do you need supplemental coverage? Most property insurance excludes flood and water damage, but you can get flood insurance through the National Flood Insurance Program (see www.FloodSmart.gov). Make a list of all valuable belongings with model numbers and purchase dates; take photos of everything in your home, and keep them in a safe place away from the house (in a safe deposit box, electronic “cloud” storage, etc.) so you’ll have that information when its time to make a claim.

Amateur Radio Emergency Service





Nassau County ARES supports Emergency Management and various local activities with radio communications



Interested in joining?
Contact
bud@ka3ogg.com





REMEMBER ALL DISASTERS ARE LOCAL!

Our goal is to make Nassau County the most prepared community in our great state! We do this by working together. It’s called the WHOLE COMMUNITY APPROACH. Every citizen in our county can make a difference in how prepared we become by preparing your own home for all types of disaster then reaching out to your neighbors. Have you ever thought about how you can get more involved? Contact us here at Nassau County Emergency Management at 904.548.0900 or NCEM@Nassauso.com! If you are serious about getting involved in CERT, Citizen Corp or other volunteering - just fill out the Volunteer Application on our webpage at:

www.NassauFL-EM.com

WARNING

A warning is issued when a hazardous weather or hydrologic event is **occurring, imminent or likely**. A warning means weather conditions pose a threat to life or property. People in the path of the storm need to **take protective action**.

WATCH

A watch is used when the **risk of a hazardous weather or hydrologic event has increased significantly**, but its occurrence, location or timing is **still uncertain**. A watch means that hazardous weather is possible. People should **have a plan of action** in case a storm threatens and they should listen for later information and possible warnings especially when planning travel or outdoor activities.

ADVISORY

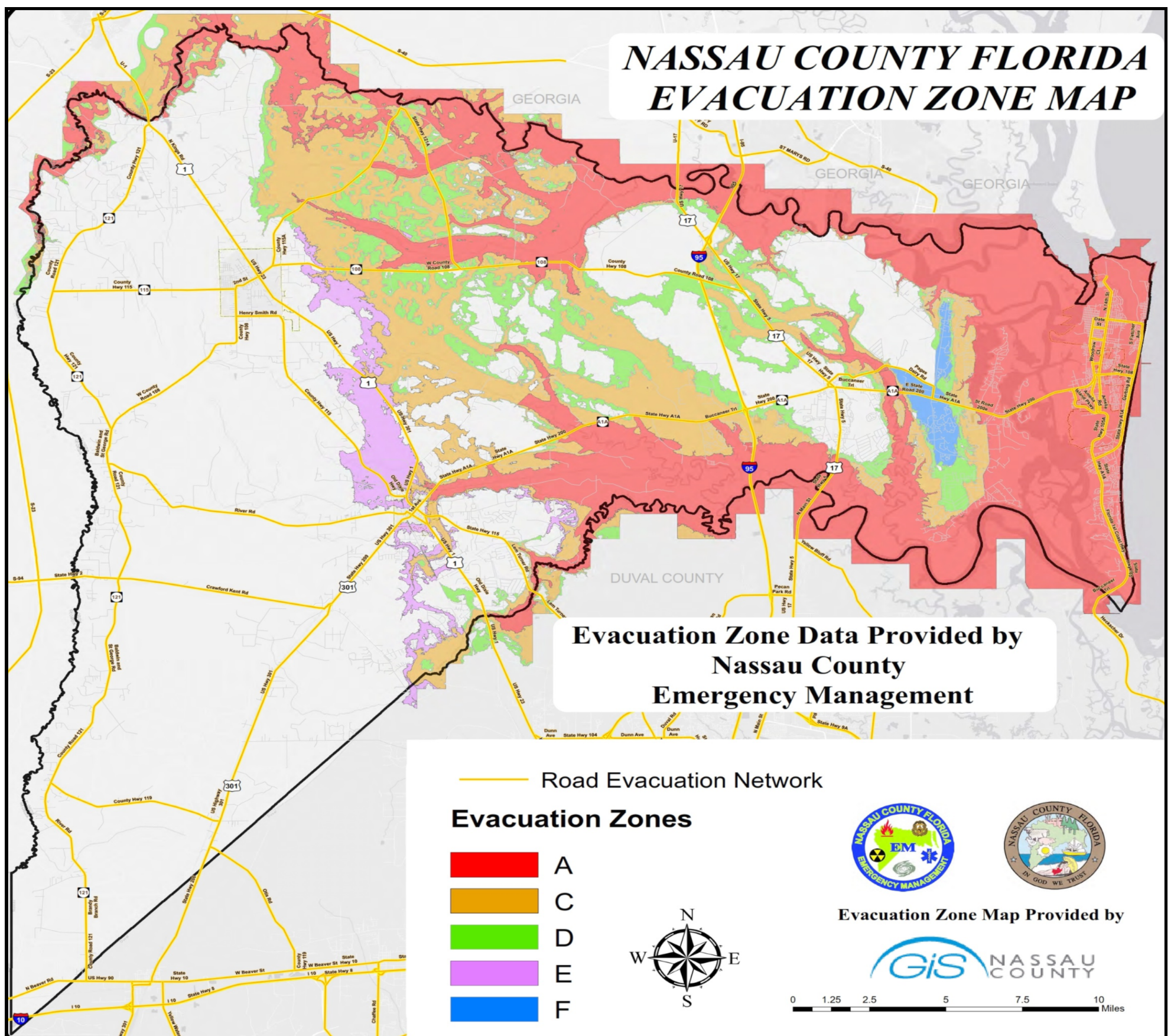
An advisory is issued when a hazardous weather or hydrologic event is **occurring, imminent or likely**. Advisories are for **less serious conditions than warnings**, that cause significant inconvenience and if caution is not exercised, could lead to situations that may threaten life or property.

OUTLOOK

An outlook is issued when a hazardous weather or hydrologic event is **possible** in the next week. Outlooks are intended to **raise awareness** of the potential for significant weather that could lead to situations that may threaten life or property.



Be Prepared
Be Aware
Be Ready



HOW DO I GET NOTIFIED?

Emergency Management has implemented the Everbridge® Citizen Alert System that lets public safety officials send alerts, warnings, and critical information to individuals, groups, or locations. The ability to push a recorded voice message with critical information out to every landline in the county helps us keep residents informed before, during, and after events.

Residents can “opt-in” to receive important alerts via text, email, or cellphone, by signing up for our “Citizen Alert” System using the link on our website www.NassauFL-EM.com. The Citizen Alert system lets us provide you with critical information quickly in a variety of situations, such as when circumstances create unexpected road closures, require protective measures like evacuations, or a shelter-in-place notice is issued for your neighborhood because of an active shooter or gas leak. You can receive voice-recorded alerts to your choice of home, mobile, or business phones, as well as text alerts, and/or email messages. Register for the Smart Weather Alerts in our system to receive notifications whenever the National Weather Service issues a watch, warning, or advisory; you select the weather conditions and severity levels for which you want to be alerted. Note: A “quiet period” has been enabled for weather alerts - you won’t be awakened between 9 pm and 6 am unless a tornado, hurricane, flash flood, or tsunami requires immediate action.



www.facebook.com/NassauEM



www.twitter.com/@NassauEM

FOLLOW US ON SOCIAL MEDIA



www.NextDoor.com



In addition to pushing emergency alerts out to the public, NCEM wants to engage residents and visitors through social media. Through social media you can ask us questions, verify facts, even post your photos of damage after a storm. By sharing and re-tweeting official messages, you help get the word out to others quickly.

Follow NassauEM on Facebook and Twitter to find out about free training opportunities, mitigation steps you can take to protect your property from damage, and preparedness tips for your family.

Our newest social media platform is Nextdoor, which operates on the premise that neighbors who know each other will look out for one another. It offers free secure websites for neighborhoods, so you can post “lost pet” or event announcements, or warn others about suspicious activities in your area. Public Safety officials can now target local hazard warnings, boil water notices, and shelter-in-place or evacuation updates directly to the affected neighborhood’s Nextdoor site. And as with other social media sites, information can go in both directions, so residents can reply or send inquiries to the staff members at Emergency Management.

PHONE: 904.548.0900 **EMAIL:** ncem@NassauSO.com **WEB PAGE:** www.NassauFL-EM.com



GOVERNMENT & COMMUNITY RESOURCES

CONTACT INFORMATION

YOUR GOVERNMENT

CLERK OF THE COURTS JOHN A. CRAWFORD
904.548.4600 • www.NassauClerk.com

PROPERTY APPRAISER A. MICHAEL HICKOX
904.491.7300 • www.NassauFLPA.com

SHERIFF BILL LEEPER
904-225-5174 • www.NassauSO.com

SUPERVISOR OF ELECTIONS VICKI P. CANNON
904.491.7500 • www.VoteNassau.com

TAX COLLECTOR JOHN M. DREW
904.491.7400 • www.NassauTaxes.com

SCHOOL SUPERINTENDENT KATHY BURNS
904-491-9900 • www.nassau.k12.fl.us

OCEAN, HIGHWAY & PORT AUTHORITY
904.491.7422 • www.portoffernandina.org

SOIL & WATER CONSERVATION DISTRICT
904.879.3372 • www.NassauSoilandWater.org

AMELIA ISLAND MOSQUITO CONTROL
904.261.5283 • www.aimcd.org

BOARD OF COUNTY COMMISSIONERS

DISTRICT ONE **DANIEL LEEPER**
FERNANDINA BEACH
904.430.3868 • dleeper@nassaucountyfl.com

DISTRICT TWO **STEPHEN KELLEY**
SOUTH AMELIA ISLAND, NASSAUVILLE, O’NEIL
904.556.0241 • skelley@nassaucountyfl.com

DISTRICT THREE **PAT EDWARDS**
YULEE, CHESTER, BLACKROCK
904.335.0260 • pedwards@nassaucountyfl.com

DISTRICT FOUR **GEORGE SPICER**
HILLIARD, BRYCEVILLE, BOULOUGNE, KINGS FERRY
904.568.3409 • gspicer@nassaucountyfl.com

DISTRICT FIVE **JUSTIN TAYLOR**
CALLAHAN, WEST YULEE
904.625.5624 • jtaylor@nassaucountyfl.com

B.O.C.C. DEPARTMENT DIRECTORY

Animal Care & Control: 904.530.6150

Board of County Commissioners: 904.530.6010

Building Dept./Permitting: 904.530.6250

Code Enforcement: 904.530.6200

County Attorney: 904.530.6100

-**Contracts/Purchasing:** 904.530.6040

County Extension: 904.530.6350

County Manager: 904.530.6010

Engineering Services: 904.530.6225

Facilities/Parks & Recreation: 904.530.6120

Fire/Rescue Headquarters: 904.530.6600

Human Resources: 904.530.6075

Libraries: 904.530.6500

Nassau Amelia Utilities (plant): 904.530.6450

Office of Management & Budget: 904.530.6010

-**Grants/SHIP:** 904.530.6020

-**NAU Billing/Rescue Billing:** 904.530.6030

Planning & Economic Opportunity: 904.530.6300

Road & Bridge: 904.530.6175

Solid Waste/Landfill: 904.530.6700

Technical Services: 904.530.6050

Website: www.NassauCountyFL.com

OTHER

EMERGENCY MANAGEMENT: 904.548.0900

VETERAN’S SERVICES: 904.548.4670

MUNICIPALITIES

City of Fernandina Beach: 904.277.7300

Town of Callahan: 904.879.3801

Town of Hilliard: 904.845.3555

HEALTH DEPARTMENT

ADMINISTRATION: 904.875.6100

CALLAHAN CLINIC: 904.320.6010

DENTAL CLINIC AT NASSAU COUNTY CHILDREN & FAMILY EDUCATION CENTER: 904.875.6090

DISEASE CONTROL: 904.557.9172

HIV CASE MANAGER: 904.557.9132

FERNANDINA BEACH CLINIC: 904.557.9130

HEALTHY START: 904.557.9125

HILLIARD CLINIC: 904.320.6020

VITAL STATISTICS (Birth & Death Certificates): 904.557.9135

YULEE CLINIC: 904.875.6110

WOMEN, INFANTS AND CHILDREN (WIC)

Callahan Clinic: 904.320.6030

Hilliard Clinic: 904.320.6020

Yulee Clinic: 904.875.6111

COMMUNITY RESOURCES

For a complete community resource guide and additional resources, please visit: www.Nassau.FloridaHealth.gov

ADULT EDUCATION AND DROP OUT

PREVENTION: 904.548.1750

ALCOHOLICS ANONYMOUS

AL-ANON ALATEEN: 904.350.0600

Alachua Club: 904.261.3580

Amelia Room: 904.261.8349

AMERICAN CANCER SOCIETY-NASSAU UNIT: 904.391.3644

BAPTIST MEDICAL CENTER-NASSAU: 904.321.3500

CANCER INFORMATION CENTER: 800.422.6237

CANCER SUPPORT GROUPS

Bosom Buddies: 904.225.0067

Man to Man Cancer Support Group: 800.227.9954

Pink Ribbon Ladies Cancer Support Group: 904.321.2057

BARNABAS CENTER: 904.261.7000 or 888.277.1986

Callahan Satellite Office: 904.507.2680

Dental Clinic: 904.261.9988

Medical Clinic: 904.261.7887

“New to You” Resale Store: 904.321.2334

BIG BROTHERS BIG SISTERS: 904.261.9500

BOYS AND GIRLS CLUB OF NASSAU COUNTY

Miller Freedom Center: 904.261.1075

Fernandina Beach Club: 904.491.9102

CEDAR HAVEN TRANSITIONAL HOME: 904.699.7477

CHILD ABUSE HOTLINE: 800.962.2873

CHILD ADVOCATE RAPID RESPONSE TEAM: 904.225.8520

COALITION FOR THE HOMELESS: info@chnassau.com

COMMUNITIES IN SCHOOLS: 904.321.2000

COUNCIL ON AGING

Alzheimer’s Support Group: 904.261.0701

Eastside Senior Center: 904.261.0701

Transportation Office (NassauTRANSIT): 904.261.0700

Westside Senior Center: 904.845.3331

CW Vision Inc: 904.572.4420

DANIEL: 904.296.1055

DEPT OF CHILDREN & FAMILIES: 904.557.9100

DISABLED AMERICAN VETERANS: 904.720.0244

ELDER SOURCE: 904.391.6699

EPISCOPAL CHILDREN’S SERVICES: 904.491.3638

FAMILY SUPPORT SERVICES (NASSAU): 904.225.5347

FAMILY SUPPORT SERVICES (JAX): 904.421.5800

Emergency After Hours line: 904.421.5818

FERNANDINA BEACH POLICE DEPT: 904.277.7342

FIRST ASSEMBLY OF GOD (Shelter): 904.261.6448

FL COMMUNITY PREVENTION CENTER: 904.321.4097

FL KIDCARE: 888.540.5437

FL MEDICAID: 866.762.2237

FL SUICIDE AND CRISIS HOTLINE: 800.273.TALK

FL QUITLINE (Tobacco): 877.277.6669

FOOD STAMPS: 866.762.2237

GERRI’S CORNER: 904.277.0099

GLEANERS DISPATCH: 904.777.6344

GOODWILL: 904.321.0086

GOODWILL-JOB JUNCTION: 904.779.2894

GUARDIAN AD LITEM: 904.630.1200

HABITAT FOR HUMANITY: 904.277.0600

HEAD START: 904.491.3631

Callahan Head Start: 904.879.5019

Peck Head Start: 904.491.3630

HILLIARD PARKS AND RECREATION

(24 HOUR FITNESS CENTER): 904.845.2733

HOUSING AUTHORITY: 904.261.5051

HOMELESS PROGRAM: 904.277.9021

HUBBARD HOUSE OUTREACH CENTER: 904.354.0076

24-Hour: 904.354.3114 • Toll Free: 800.500.1119

HUBBARD HOUSE THRIFT STORE: 904.400.6333

INDEPENDENT LIVING RESOURCE

CENTER OF NE FL: 904.399.8484

JO HELLER TRANSITION HOUSE: 904.206.4120

JOBCORPS: 904.360.8200 • 800.733.5627

LIFE CARE CENTER OF HILLIARD

(Alzheimer’s Support Group): 904.845.3988

MCPHERSON COUNSELING SERVICES: 904.548.0160

MEDICARE: 800.633.4227

MICAH’S PLACE: 904.491.6364

24-Hour: 800.500.1119

NASSAU ALCOHOL, CRIME & DRUG ABATEMENT

COALITION (NACDAC): 904.277.3699

NARCOTICS ANONYMOUS: 904.723.LOVE

NATIONAL ALLIANCE FOR THE MENTALLY ILL

(NAMI NASSAU COUNTY): 904.277.1886

NE FL COMMUNITY ACTION AGENCY: 904.261.0801

NE FL COMMUNITY HOSPICE: 904.225.0411

PARENT HELP CENTER: www.ihelpparents.com

PRESCRIPTION ASSISTANCE PROGRAMS:

• www.rxassist.org

• www.pparx.org

• www.needymeds.org,

• www.medicare.gov/pap

PURPLE DOVE RESALE CENTER: 904.261.5227

SAFE KIDS: 904.202.4302

SEXUAL ASSAULT (RAPE): 888.956.7273 (RAPE)

SUICIDE LIFELINE (24 HOUR): 800.273.8255 (TALK)

SALVATION ARMY HOPE HOUSE: 904.321.0435

SERVING HEALTH INSURANCE NEEDS OF ELDERS
(SHINE): 904.391.6699

STARTING POINT BEHAVIORAL CENTER: 904.225.8280

TLC PREGNANCY CENTER: 904.321.2008

VICTIM SERVICES ADVOCATE: 904.548.4099

After hours, call Sheriff’s Office: 904.225.5174

VITAS Innovative Hospice Care: 904.491.1759

WOMENS’ RESOURCE CENTERS OF JACKSONVILLE & NASSAU

Yulee: 904.206.2993

Jacksonville: 904.696.9100

WORKSOURCE: 904.432.0009

YMCA— Fernandina: 904.261.1080

FOOD BANKS

FERNANDINA BEACH

BARNABAS CENTER: 904.261.7000 or 888.277.1986

HOPE HOUSE: 904.321.0435

FERNANDINA BEACH CHURCH OF CHRIST

(Cold Night Shelter): 904.277.2517

YULEE

THE JOURNEY CHURCH: 904.261-8310

GRACIE’S KITCHEN: info@chnassau.com

YULEE UNITED METHODIST CHURCH: 904.225.5381

YULEE BAPTIST CHURCH: 904.225.5128

MERCY HILL BAPTIST CHURCH: 904.225.0777

O’NEAL MEMORIAL BAPTIST CHURCH: 904.277.2606

SPRINGHILL BAPTIST CHURCH: 904.261.4741

HILLIARD

FIRST AVENUE BAPTIST CHURCH: 904.845.2047

HILLIARD FIRST ASSEMBLY OF GOD: 904.845.2642

CALLAHAN

FIRST BAPTIST CHURCH GRAY GABLES: 904.879.2986

FIRST BAPTIST CHURCH OF CALLAHAN: 904.879.2172

COMMUNITY DINNER-CALLAHAN FAIRGROUNDS:

Wednesdays at 5pm

JACKSONVILLE

SECOND HARVEST FOOD BANK OF NE FL

(Jacksonville): 904.353.3663

FEDERAL & STATE

US SENATOR BILL NELSON

904.346.4500 • <http://billnelson.senate.gov>

US SENATOR MARCO RUBIO

904.398.8586 • <http://rubio.senate.gov>

US REPRESENTATIVE JOHN RUTHERFORD

904.831.5205 • <http://rutherford.house.gov>

GOVERNOR RICK SCOTT

850.488.7146 • www.flgov.com

STATE SENATOR AARON BEAN

904.757.5039 • www.flsenate.gov

STATE REPRESENTATIVE CORD BYRD

904.548.9333 • www.myfloridahouse.gov