

EMERGENCY MANDATORY EVACUATION ORDER

AN ORDER OF THE NASSAU COUNTY EMERGENCY MANAGEMENT DIRECTOR, PURSUANT TO THE PREVIOUSLY APPROVED STATE OF LOCAL EMERGENCY; DECLARING A MANDATORY EVACUATION IN CERTAIN AREAS; AND WAIVING CERTAIN PROCEDURES AND FORMALITIES IN ACCORDANCE WITH CHAPTER 252.38(3)(A)(5), FLORIDA STATUTES.

WHEREAS, the Board of County Commissioners of Nassau County, Florida, has recognized the danger to residents in certain areas of Nassau County, Florida from Hurricane Irma; and

WHEREAS, Hurricane Irma has the potential for causing extensive damage to public utilities, public buildings, public communication systems, public streets and roads, public drainage systems, commercial and residential buildings and other essential services; and

WHEREAS, pursuant to the Nassau County Comprehensive Emergency Management Plan and Chapter 252, Florida Statutes, the Emergency Management Director in consultation with the County Manager and Executive Committee, has the authority to order a mandatory evacuation; and

WHEREAS, Hurricane Irma poses a significant threat to the safety of the citizens in certain flood prone areas of Nassau County from flooding due to storm surge; and

WHEREAS, Governor Scott, pursuant to Execution Order Number 17-235, declared a State of Emergency for the State of Florida; and

WHEREAS, Chapter 252.38(3)(a)(5), Florida Statutes, provides authority for a political subdivision such as Nassau County to declare a "state of emergency" and to waive certain procedures and formalities otherwise required of political subdivision by law, which was accomplished on September 6, 2017, pursuant to Resolution No. 2017-128; and

WHEREAS, the Board of County Commissioners of Nassau County, Florida on September 6, 2017, declared a state of emergency pursuant to Resolution No. 2017-128.

NOW, THEREFORE, BE IT ORDERED by the Nassau County Director of Emergency Management, pursuant to consultation with the County Manager and Nassau County Sheriff, that:

1. Pursuant to Nassau County Comprehensive Emergency Management Plan, and Chapter 252, Florida Statutes, the Nassau County Emergency Management Director for Nassau County, Florida, hereby issues the following mandatory evacuation order.

(a) Effective as of 2:00 PM EST, on September 7, 2017 a mandatory evacuation order is hereby issued.

(b) The evacuation order is being issued for residents of Nassau County, located in Evacuation Zone A, Evacuation Zone C, and Evacuation Zone F, as set forth in the attached Exhibit A as well as all manufactured homes within Nassau County.

(c) Evacuation of the citizens in the above referenced zones will go into effect at 6:00 p.m. on Friday, September 8, 2017 and evacuation shall be completed on or before 12:00 p.m. on ~~Sunday September 10, 2017~~.

2. This Evacuation Order shall remain in effect until lifted by further order of the Emergency Management Director or Board of County Commissioners.

3. This Order shall be disseminated by the Emergency Management Public Information Officer including copies to:

(a) The Sheriff of Nassau County, Florida.

(b) The Fernandina Beach Police Chief.

(c) State Law Enforcement agencies.

(d) News media.

4. This Order shall take effect immediately upon its adoption.

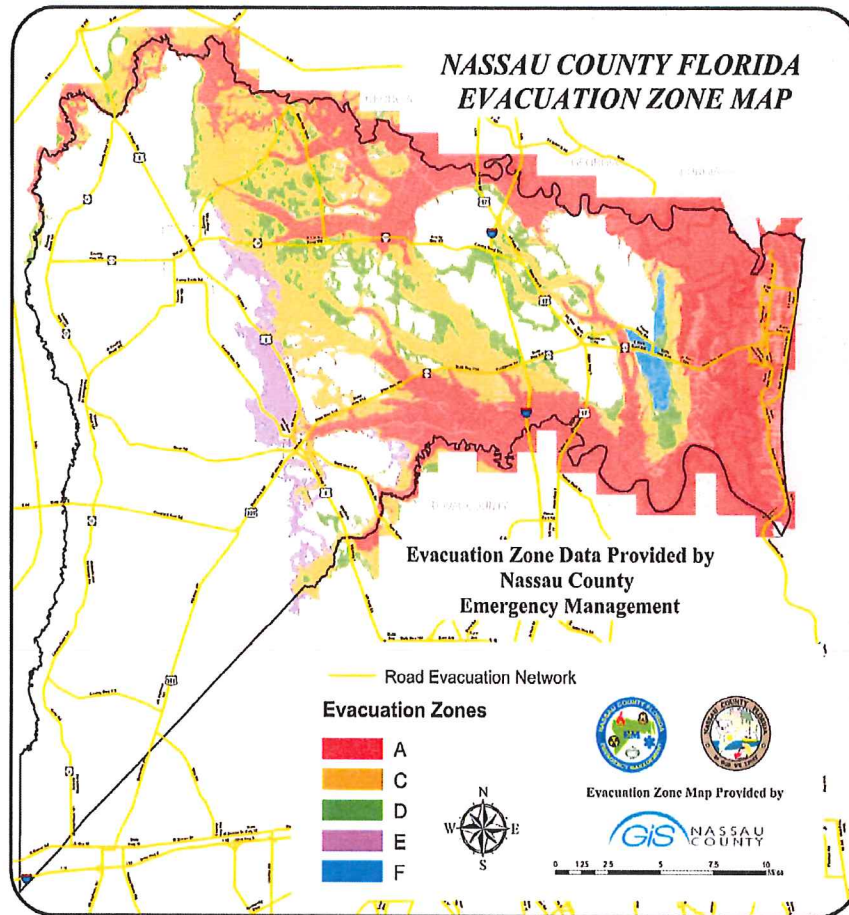
ISSUED this 7th day of September, 2017.

DIRECTOR OF EMERGENCY MANAGEMENT
NASSAU COUNTY, FLORIDA



WILLIAM G. (BILLY) ESTEP

EXHIBIT "A"



Approved as to form by the Nassau County Attorney:



MICHAEL S. MULLIN